

<b>Project Title:</b>	CORONAVIRUS (COVID 19)					<b>Risk Assess. No.:</b>	<b>D14</b>							
<b>Task/Activity:</b>	Construction Site Activities					<b>Project No.:</b>								
						<b>Date Prepared:</b>								
HAZARDS						Likelihood			Severity				Risk Score	
Ref.	Key hazards associated with the above task/activity.					Probable	Occasional	Remote	Catastrophic	Critical	Serious	Marginal	Negligible	Likelihood x Severity
	Score:					3	2	1	5	4	3	2	1	
1	Contracting COVID 19						X		X					10
2	Transmitting COVID 19						X		X					10
3														
<b>Risk Assessment Scores:</b>		<b>10+ High Risk</b>			<b>5-9 Medium Risk</b>			<b>1-4 Low Risk</b>						
PERSONS AFFECTED						PPE REQUIREMENTS								
Operatives	X	Members of Public		Site Visitors	X	Harness & Lanyard		Hi-Viz Clothing		Respiratory Protection	X			
Other Workers	X	Managers	X	Young Persons	X	Hearing Protection		Eye Protection		Head Protection				
Others						Gloves	X	Boots		Sanitiser/ Soap & water	X			
ADDITIONAL CONTROL MEASURES														
Information/Instruction/Training						Managerial Controls								
<ul style="list-style-type: none"> <li>➤ The Site Manager will ensure this Risk Assessment is conveyed to all site workers and visitors at induction stage prior to any works commencing and record confirmation.</li> </ul>						<ul style="list-style-type: none"> <li>➤ The site manager will ensure that this risk assessment is monitored and workers compliant with its contents at all times whilst this site is operational.</li> <li>➤ The site manager may need to rearrange tasks to enable them to be carried out by one person, to maintain social distancing</li> <li>➤ The site manager will encourage the use of mechanical lifting aids, rather than manually reducing risk of skin contact.</li> <li>➤ The site manager will ensure a robust cleaning regime on all skin contact surfaces is maintained throughout site .i.e. ladders rungs, staircase rails.</li> </ul>								

Revision	Date	Prepared By
001	24/4/2020	H & G CSA Ltd (CCL)

	<ul style="list-style-type: none"> <li>➤ Traffic management i.e. pedestrian routes must be rigorously enforced one way walkways should be designed and construction where ever possible or passing area on existing routes.</li> <li>➤ Access to scaffold etc should be via Haki stair cases rather than ladders, hand rails on stair cases should be cleaned and sanitiser stations set up at the bottom and top of all access points.</li> <li>➤ Scaffold working will be restricted so as to ensure 2m social distancing is maintained, one way routes around scaffolding or passing points set up</li> </ul>
<b>Physical Controls</b>	<b>Procedural Controls</b>
<ul style="list-style-type: none"> <li>➤ All plant operators must ensure it's a one machine one operator at all times.</li> <li>➤ All surfaces i.e. door handles, operational controls, and radio, air conditioning will be wiped clean.</li> <li>➤ All keys must be only in the position of the operator at all times.</li> <li>➤ PPE uses must never be shared and cleaned maintained by user.</li> <li>➤ All tools such as drills, saws, hilt guns, must never be shared and cleaned prior to use and at the end of shift using 60% alcohol wipes.</li> <li>➤ Any area where people are likely to gather 2m gridlines/markers must be shown .</li> <li>➤ Mobile towers, step ladders, brushes are not be shared unless cleansed prior to use.</li> <li>➤ Any material handling that will increase the risk of skin contact gloves should be worn (i.e. skin to skin or face to face)</li> </ul>	<ul style="list-style-type: none"> <li>➤ All workers must ensure that they adhere to the 2m self-distancing rules when working on site. In order to assist in this process the following procedures should be followed:</li> <li>➤ Workers to work in their own individual rooms/areas pre designated.</li> <li>➤ Workers who need to enter a room/area occupied by another worker should knock on the door and await instruction to enter or make distant contact.</li> <li>➤ When walking around the site all operatives must ensure that they are pay close attention to their surrounding and others who are working on site, 2 metre social distancing must be maintained.</li> <li>➤ Regular communications to take place between workers and the Site Manager so that their areas of work can be designated to avoid over-crowding.</li> <li>➤ If a site activity arises where it cannot be undertaken without breaching the 2m self-distancing rules workers must discuss with the site manager and an individual assessment must be produced for activity that details the additional measures to be implemented in order to undertake this activity. If the site activity after risk assessment cannot be controlled out then the activity should be ceased or even close the site.</li> <li>➤ All workers to strictly follow company procedures regarding self-isolation and feeling unwell.</li> <li>➤ All workers to wash their hands on entering and exiting the building and at regular times during the day.</li> <li>➤ All workers to keep the toilet facilities, welfare facilities and hand wash facilities clean and tidy.</li> <li>➤ All workers to keep the site clean and tidy at all times.</li> <li>➤ All workers to ensure the 2m self-distancing rule is maintained and must report to the Site Manager if they feel this is unachievable for any activity prior to commencing it.</li> <li>➤ All workers to cover mouths if they cough or sneeze with either crook of elbow or disposable tissue.</li> </ul>

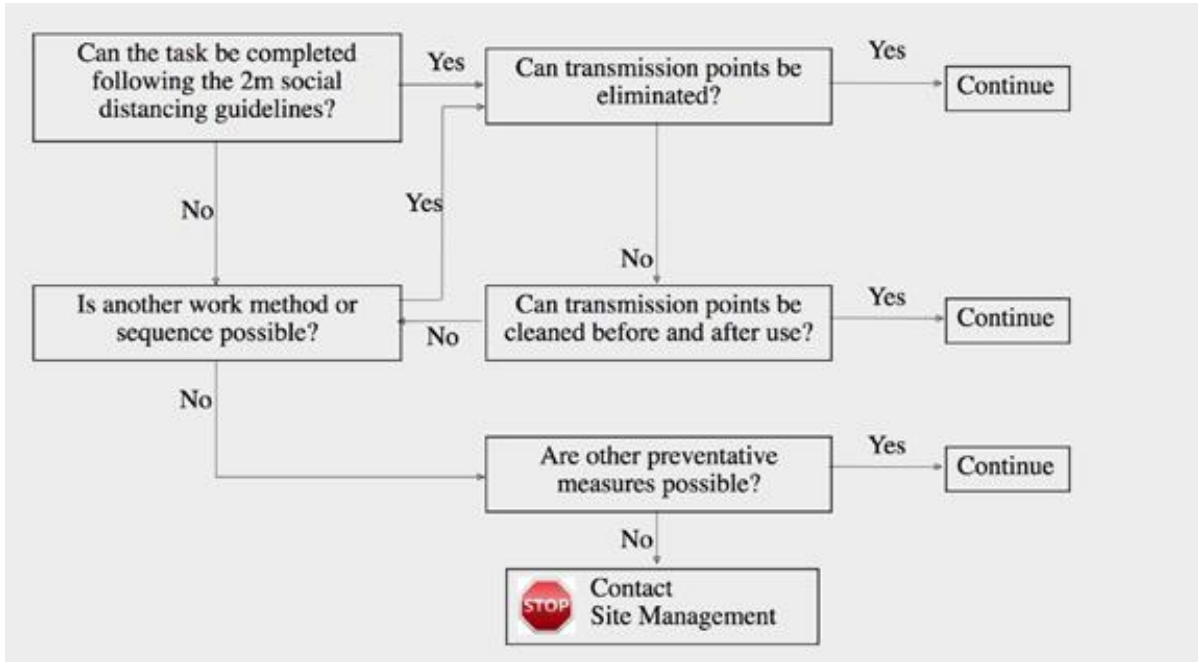
Revision	Date	Prepared By
001	24/4/2020	H & G CSA Ltd (CCL)

	<ul style="list-style-type: none"> <li>➤ Face masks will be worn as a last resort when unable to maintain social distancing in the pre -assessed activity.</li> </ul>
<b>HSE &amp; Other Guidance</b>	<b>Comments</b>
<ul style="list-style-type: none"> <li>➤ Public Health England Guidelines</li> <li>➤ Construction Leadership Council (version 3 14/4/2020)</li> </ul>	<ul style="list-style-type: none"> <li>➤ It is essential that all workers follow this PHE Guidelines on social distancing.</li> <li>➤ Appendix 1 Social distancing flow chart</li> </ul>
<p style="text-align: center;"><b>Residual Risk Rating</b> Considering the above control measures</p>	<p><b>Site Manager:</b></p> <p><b>Name:</b></p> <p><b>Signature:</b></p> <p><b>Date:</b></p>
<p style="text-align: center;"><b>MED/LOW</b></p>	

Revision	Date	Prepared By
001	24/4/2020	H & G CSA Ltd (CCL)

## Appendix 1

<b>Social Distancing</b>	<b>Transmission Consideration</b>	<b>Plan of Action</b>
--------------------------	-----------------------------------	-----------------------



Revision	Date	Prepared By
001	24/4/2020	H & G CSA Ltd (CCL)